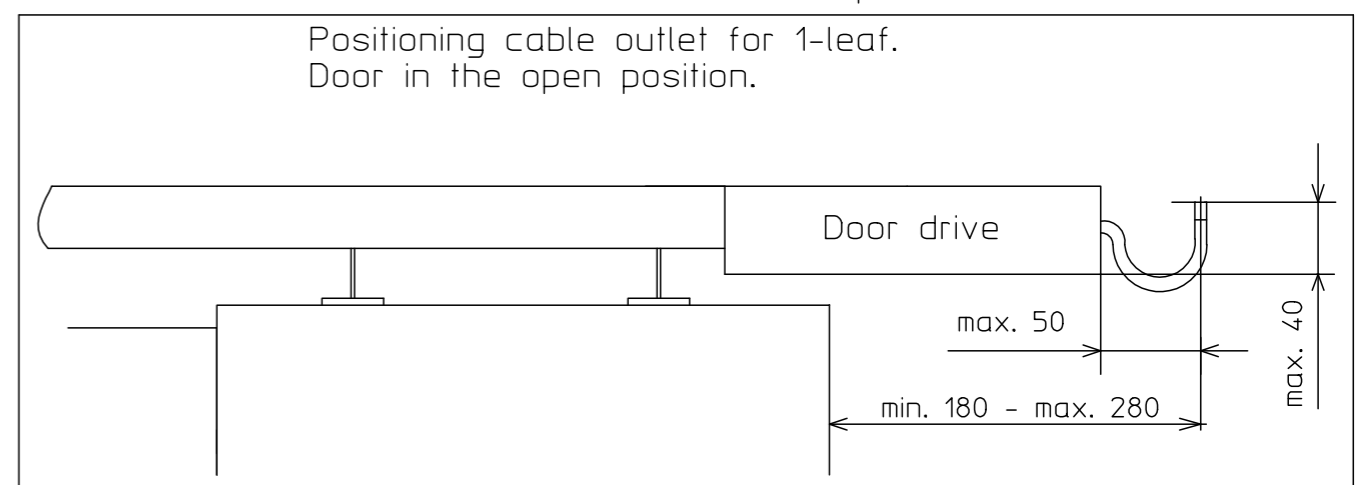
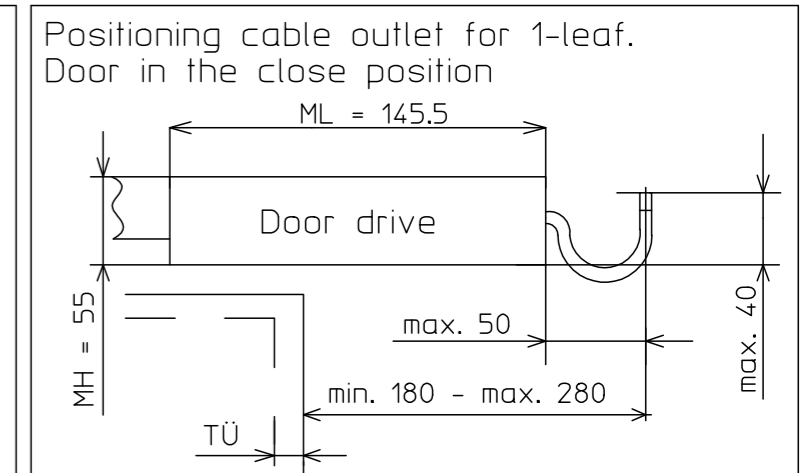
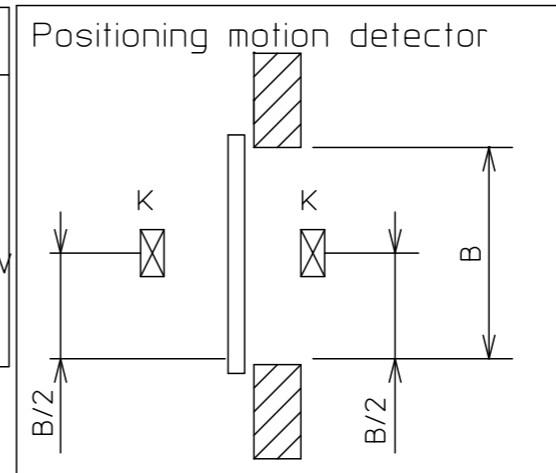
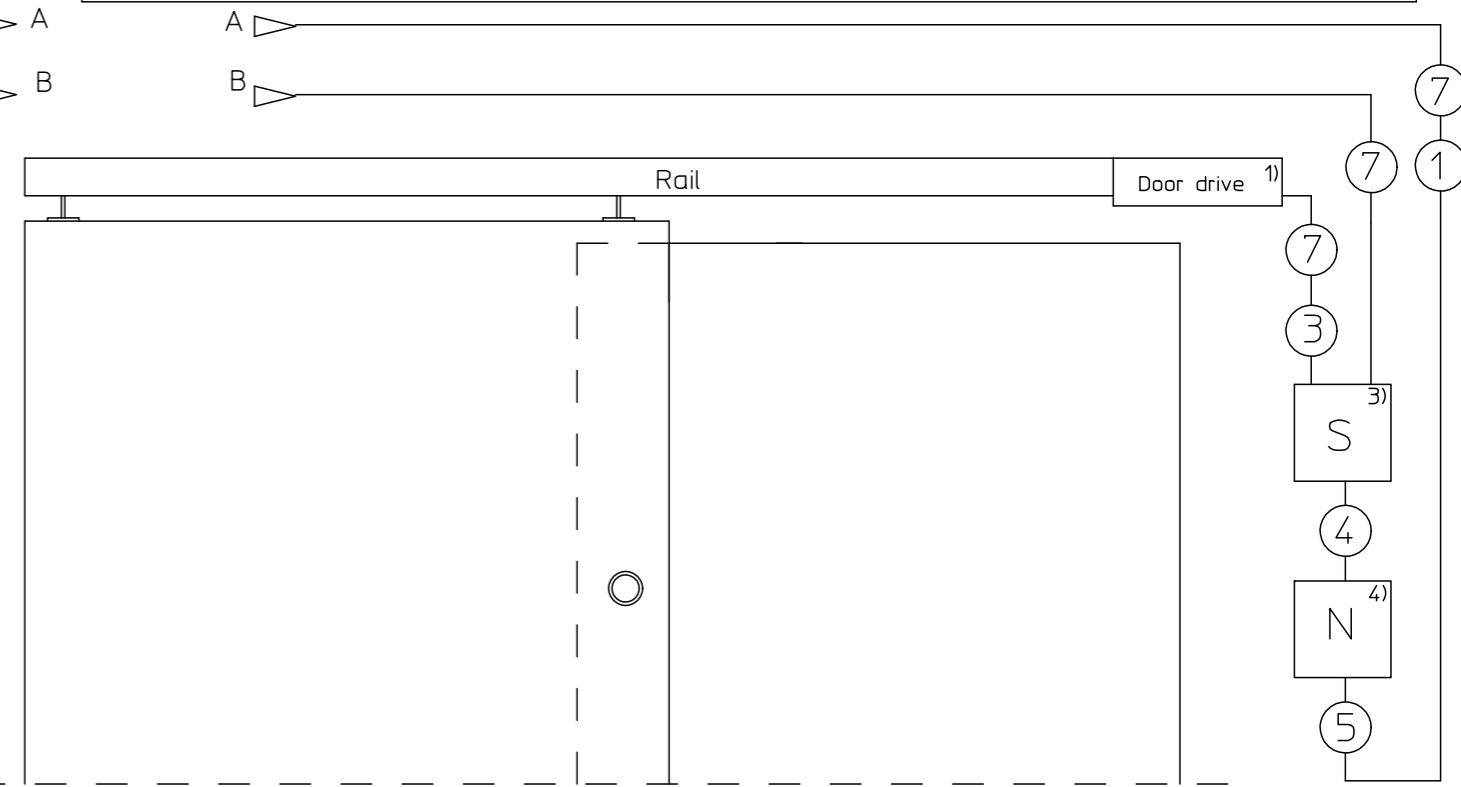
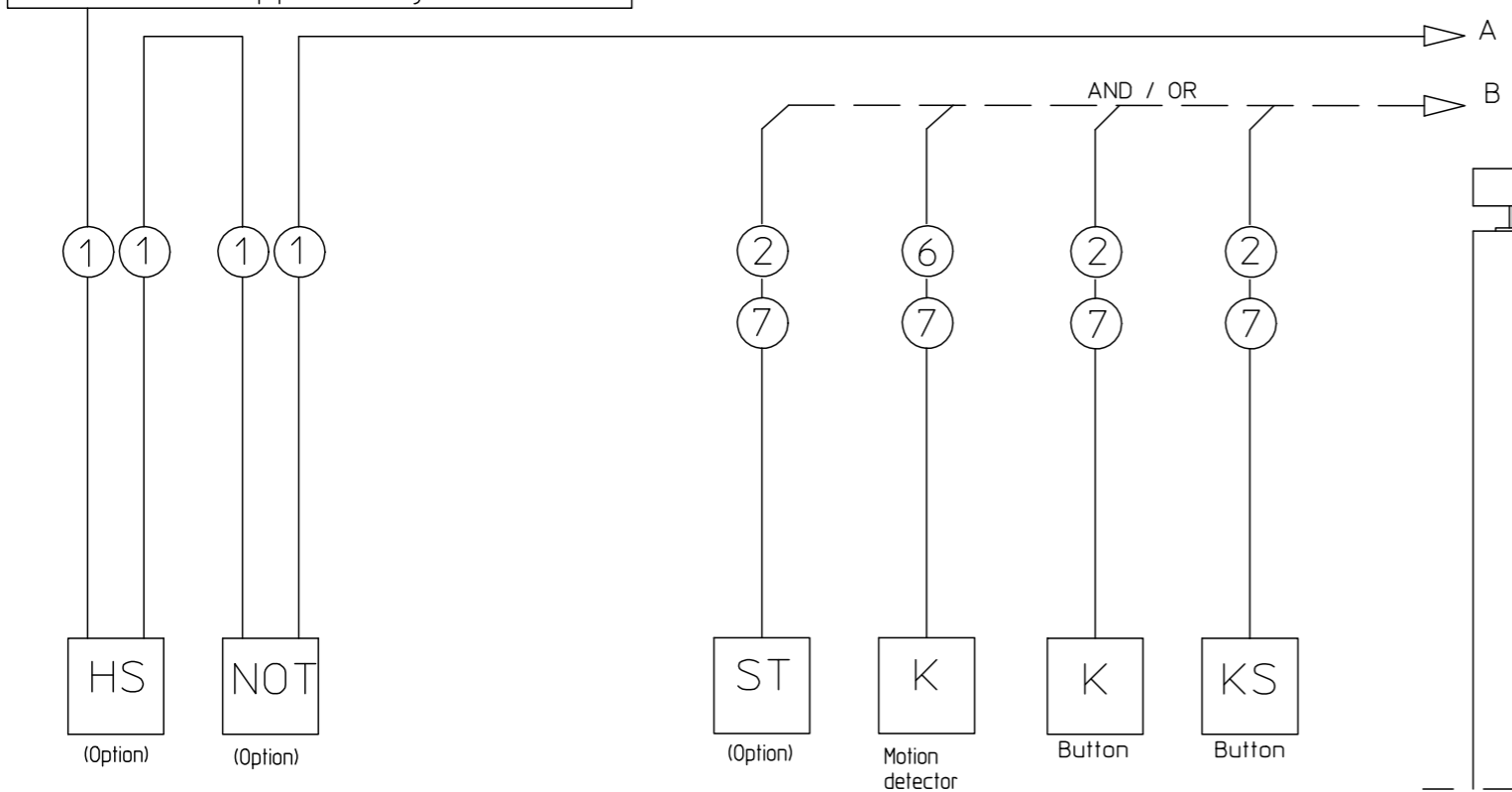


Cable:	Instruction:	Abbreviations:
<ul style="list-style-type: none"> <li>① NYM-J 3 x 1,5mm<sup>2</sup></li> <li>② J-Y(ST)Y 2 x 2 x 0,6 LG</li> <li>③ Included in delivery (2,5m) LIY11Y 4 x 0,25mm<sup>2</sup> + 2 x 1,0 mm<sup>2</sup></li> <li>④ Included in delivery (0,20m) NYM-O 2 x 0,75mm<sup>2</sup></li> <li>⑤ Included in delivery (0,16m) NYM-O 2 x 1,5mm<sup>2</sup></li> <li>⑥ Included in delivery</li> <li>⑦ Leerrohr mit Zug- draht Innen-ø 10mm verlegen.</li> </ul>	<p>Wiring in accordance with VDE 0100</p> <p>Cable for the control must be at least 100mm stick out the wall.</p> <p>Lay the conductors so that single-insulation power conductors do not cross single-insulation 24 V low voltage conductors.</p> <p>The electrical installation at the customer has to have an all-pole power disconnecter that can be secured reli-ably against reactivating (e.g. lockable switch with at least 3 mm contact opening)</p> <p>1) Cable outlet for external operation see view for positioning 1- leaf Perlan AUT-NT</p> <p>2) Cable included in delivery by sensor.</p> <p>3) Customer combined port-box according to DIN 49073 for power supply</p> <p>4) Customer combined port-box according to DIN 49073 for control cable</p>	<p>HS = Main switch NOT = Emergency OFF switch ST = Stop switch K = Actuation device KS = Actuation device close S = Control N = Power supply 230V/24V ML = Engine length MH = Engine height TÜ = Door leaf overhang</p>



Power supply line 230V / 50 Hz  
Fuse 10A (supplied buy customer)



Connecting diagramm:  
10421-9-9609; 139997

Diese Zeichnung entspricht dem Entwicklungsstand des Zeichnungsdatums bzw. der letzten Änderungseintragung. Aus der Benützung der Zeichnung können keine Ansprüche, gleich welcher Art, einschließlich Schadenersatzansprüche, abgeleitet und gegen GEZE geltend gemacht werden. Die Zeichnung bleibt unser Eigentum und ist Dritten nur für die Vertragsdauer zur Benutzung überlassen. Sämtliche sich aus der Zeichnung ergebenden Ansprüche stehen ausschließlich GEZE zu. Ohne vorherige Zustimmung von GEZE darf diese Zeichnung weder vervielfältigt noch Dritten zugänglich gemacht werden.  
This drawing shows the actual state of product development at the date of the drawing or the revision date. No claims or damages in any form can be made against GEZE as a result of the interpretation of this drawing. This drawing remains the property of GEZE and is made available to third parties only for the duration of contractual obligations. All rights connected with this drawing remain in possession of GEZE. This drawing may not be copied or handed over to third parties without the express consent of GEZE.

EMPB = Erstmusterprüfbericht /First sample test report

		<b>GEZE GmbH</b> P.O. Box 13 63 71226 Leonberg Germany		Benennung / designation	
		<b>vertraulich / confidential</b>		<b>Cable plan</b> <b>Perlan AUT-NT</b>	
erstellt / drawn	17.02.11	Name / name	tbg6	Blatt / von sheet / of	1 / 1
gepr. / checked	18.02.11		tbg3	Maßstab scale	1
Ersatz für: subst. for:		Sprache / language	D	Material-Nr. ID-no.	141242
Ersetzt durch: subst. with:				Zeichnungs-Nr. / document-no.	10421-9-9616
EMPB (Dokversion docversion)	Datum date	Name name	Mitteilungs-Nr. Doc. change no.		
00	18.02.11	tbg6	49072		